

Data Sheet — 430

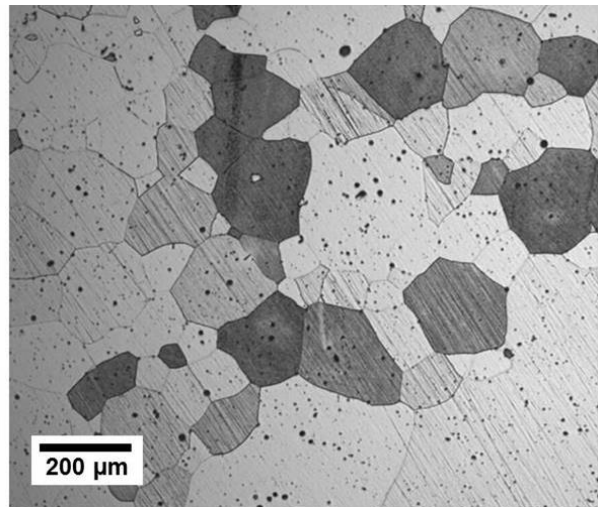
for technical applications

Comparable Standards	DIN 1.4016	X 6 Cr 17	AISI / SAE 430
	ISO 22068 MIM-430-210	MPIF Standard 35 MIM-430L	

Composition	Fe	C	Cr	Mn	Si	sonstige
	min (wt.%)	-	15.5	-	-	-
	max (wt.%)	Bal.	18.0	1.5	1.0	1.0

Typical Properties	Density	Hardness	R _m	R _{p0.2}	A ₁₀	
	g/cm ³	HV10	MPa	MPa	%	
	as sintered	≥ 7.5	≥ 100	≥ 350	≥ 200	≥ 20

Microstructure as sintered



Characteristics

Ferromagnetic stainless steel, heat-resistant, limited corrosion resistance

Typical Applications

Components usable in interior:
Household appliances and kitchenware, building and construction industry, mechanical engineering, electronic equipment, food industry

These data presented here are based on our current knowledge and experience, but no liability can be assumed.