

Data Sheet — FN02

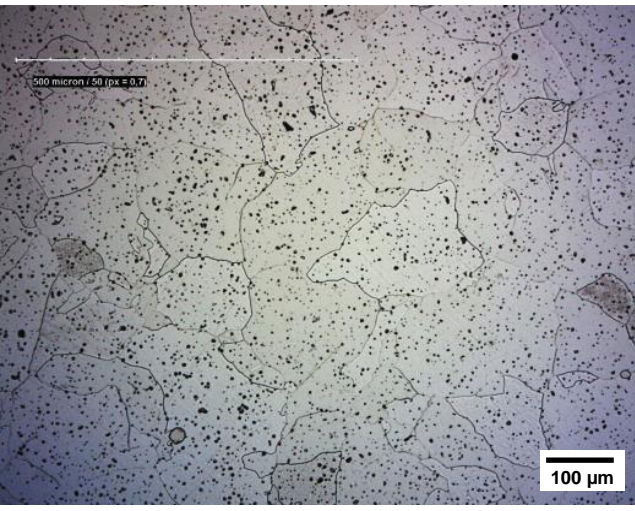
for technical applications

Comparable Standards	Fe-2Ni	
	ISO 22068 MIM-Fe2Ni-110	MPIF Standard 35 MIM-2200

Composition	Fe	C	Ni	Si	Mo	others
	min (wt%)	-	1.5	-	-	-
	max (wt%)	Bal.	0.1	2.5	1.0	1.0

Typical Properties	Density	Hardness	R _m	R _{p0.2}	A ₁₀
	g/cm ³	HV10	MPa	MPa	%
	as sintered	≥ 7.5	≥ 80	≥ 255	≥ 110
case hardened		≥ 600 HV0.2			

Microstructure as sintered



Characteristics Ferritic Ni-steel suitable for case-hardening

Typical Applications Versatile material with excellent surface properties. Used in automotive and mechanical engineering, among others for soft magnetic applications requiring high saturation polarization.

These data presented here are based on our current knowledge and experience, but no liability can be assumed.